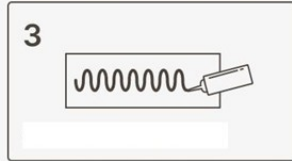
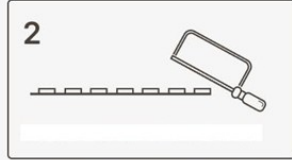
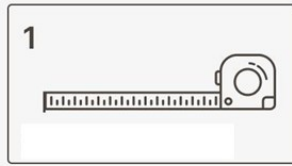


✓ I pannelli possono essere posizionati verticalmente, orizzontalmente e in diagonale, utilizzando chiodi, viti o collante.

✓ I pannelli possono essere incollati su quasi tutte le superfici:

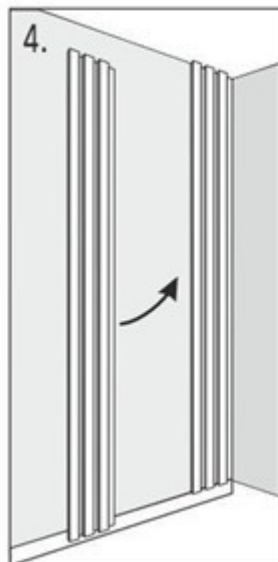
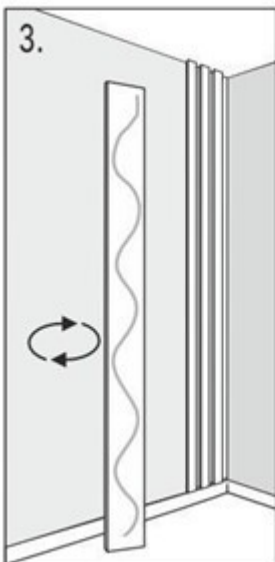
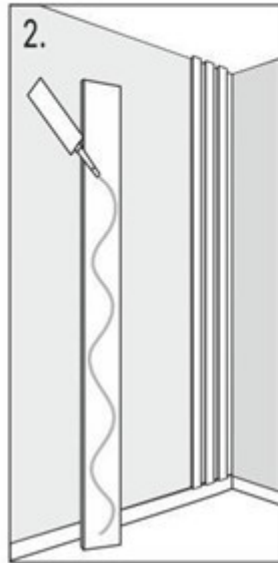
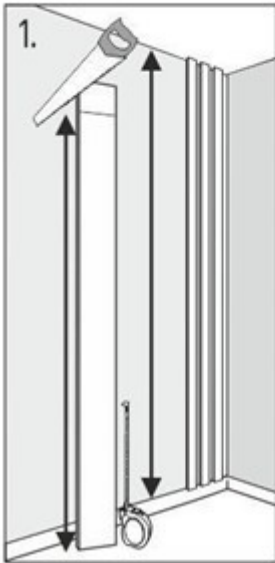
- Calcestruzzo
- Cartongesso
- Superfici in legno.

✗ Si sconsiglia di applicare i pannelli su carta da parati.



FACILE INSTALLAZIONE

Installazione con collante



Installazione con battenti in legno e chiodi

